

The following is reprinted from an article titled 'How a Flower Becomes a Chestnut: Morphological Development of Chinese Chestnuts (*Castanea mollissima*)' published in the *Journal of the American Chestnut Foundation*, March/April 2014. A copy of the original article with References is available from the editor at nutgrower@eastvic.net.

¹Amy Miller, ²Diane D. Miller, and ³Paula M. Pijut

¹Purdue University, Dept. of Forestry and Natural Resources, Hardwood Tree Improvement and Regeneration Center (HTIRC), 715 West State St., West Lafayette, IN. ²The Ohio State University, Ohio Agricultural Research and Development Center, Wooster, OH, and ³USDA Forest Service, Northern Research Station, HTIRC, 715 West State St., West Lafayette, IN.

N.B. Amy Miller reports via email that the developmental process of Sweet chestnut is quite similar to Chinese chestnut. In fact, all chestnuts follow the same general developmental sequence. Her article has also been of interest to people who grow American chestnuts. Ed.

Chestnut species, which regularly bear sweet, nutritious nuts that are high in carbohydrate, but low in fat (Bounous and Marinoni 2005; McCarthy and Meredith 1988; Senter et al. 1994), have historically been an important food source for people in remote, mountainous areas, and are highly valued in the cuisine of several cultures around the world. The nuts

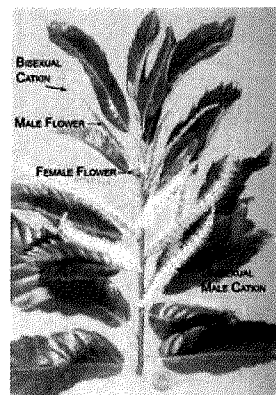


Figure 1. Twig with catkins at the onset of flowering.

are also an important food source for wildlife (Burke 2013; Paillet 2006).

Of the seven distinct species, three chestnut species— Chinese chestnut (*C. mollissima* Blume), Chinese chinquapin (*C. henryi* (Skan.) Rehder and E.H. Wilson), and Seguin chestnut (*C. seguinii* Dode)—are native to China; Japanese chestnut (*C. crenata* Siebold and Zucc.) is native to Japan and Korea; European or Sweet chestnut (*C. sativa* Mill.) is found in Europe, Anatolia, and the Caucasus; and American chestnut (*C. dentata*) and the chinkapin (*C. pumila* (L.) Mill.) are native to North America (Mellano et al. 2012). Despite separation by seas and continents, chestnut species are similar in terms of their site requirements and climatic limits (Hunt et al. 2012; Fitzsimmons 2006; Fei et al. 2012). General biological traits of these species are also similar, including reproductive strategies and morphological development (Bounous and Marinoni 2005), and they easily interbreed when cultivated together.

In their native forests, most chestnut species are canopy trees with upright growth forms, while the chinkapin is a large shrub restricted to forest edges. There is great interest in chestnuts for several reasons: forest and timber restoration of the American chestnut, reforestation and reclamation of strip mine lands, and commercial cultivation and production of other *Castanea* spp. (namely, Chinese chestnut) and hybrids. It is important to

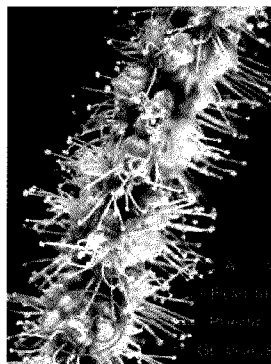


Figure 2. Fertile catkin.

understand reproductive development in order to design effective breeding programs (Shi and Stösser 2005; Shi and Xia 2010).

We have assembled a collection of photos that show the sequence of morphological development of Chinese chestnut from flowers to mature fruit, and these photos illustrate growth of the structures that are the components of yield. The developmental sequence of flower and fruit affects gene expression, which has implications for commercial crop yields, selecting components to target for crop improvement, the mechanics of artificial pollination, and inheritance studies. These specimens were photographed from orchard-grown Chinese chestnuts in

Carrollton, Ohio, USA. The timing of flower development reflects climatic conditions for that area in eastern North America.

Chinese chestnut flowers in mid-summer, with flowers typically reaching anthesis from late June through mid-July in Ohio. Flowers are borne on catkins arising from the leaf axils of current season's growth (Figure 1).

Two types of catkins occur: bisexual catkins that bear one or more female flowers at the base and male flowers toward the tips, and unisexual male catkins, also called staminate catkins. Bisexual flowers occur toward the apex of the twig and tend to reach maturity later than the unisexual flowers, which occur toward the base of the twig (Bounous et al. 1992).

The male catkins occur in abundance and can produce a large quantity of pollen, which is typically wind dispersed. Upon each catkin are glomerules, clusters of staminate flowers (Figure 2). Each staminate flower is composed of a perianth and multiple stamens, with each stamen composed of a filament and anther. These filaments and anthers give the catkins their characteristic fuzzy appearance, as well as their distinctive pungent odor.

At the base of each bisexual catkin is one or more pistillate inflorescence, also referred to as the involucre (Figure 3), which typically contains three female flowers (three pistils per involucre). Each pistil comprises an ovary and multiple rigid, pubescent styles, each with a glabrous stigma at the tip. Peak pollen receptivity of the three flowers is staggered in time, with the central flower becoming receptive several days before the adjacent ones. As each flower becomes receptive, the cluster of styles becomes visible. *Castanea* is generally not self-fertile; therefore, cross-pollination is needed for effective fertilization.

Roughly three weeks after the start of bloom, typically in mid-July in Ohio, pollen production ceases, coinciding with senescence, browning, and drop of male catkins and the male portions of bisexual catkins. Simultaneously, female

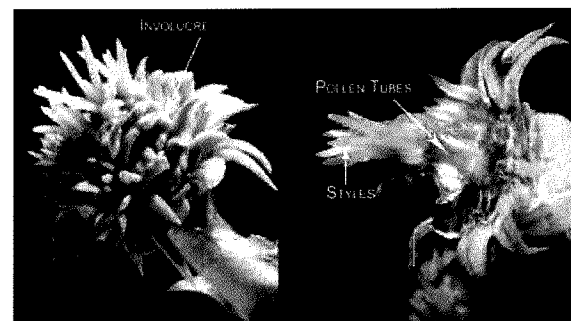


Figure 3. Involucre: outside (left) and inside (right).

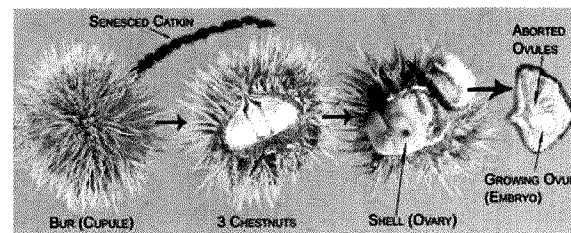


Figure 4. Layers inside the expanding bur.

flower stigmas cease receptivity, the styles begin to darken, and the fertilized ovaries begin to grow. The soft, green involucre containing three female flowers now becomes the recognizable green, spiny cupule (the chestnut bur) containing the three growing ovaries (nut shells). Approximately two months after pollination, three separate nuts are visible nestled side by side (Figure 4). Removing the shell from one of the nuts reveals the ovules. Each ovary contains 12-18 ovules, which remain equal in size until approximately one month after peak pollination.

A close-up view of the embryo and the internal structure of a nut, when the bur and shell are peeled away, reveals that one embryo develops into the kernel while the others abort (Fig. 5). The developing embryo, attached at the tip to a placenta, connects the tip of the nut to the base of the shell (the hilum). The hilum is the point of attachment of each nut to the inside of the bur and allows the transfer of carbohydrates and nutrients into the developing kernel from the bur and shoot. The embryo fills from the tip and expands downward, eventually filling the entire space inside the shell.

As the kernel expands, the placenta is pushed to the side and eventually fits tightly between the kernel and the nutshell. The shell and bur size up before the kernel grows to capacity.

Approximately eight weeks after pollination, the kernel is very small and most of the inside of the shell is filled with the integument, appearing fuzzy and white (Figure 6). By 10 weeks, the yellow kernel has expanded significantly, but not yet filled

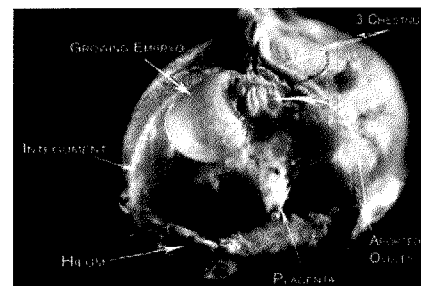


Figure 5. Internal anatomy of a developing chestnut.

the shell. Approximately 12 weeks after pollination, the yellow kernel has fully expanded to fill the inside of the shell, and the integument has become a skin-like seed coat, brown and white in color (the pellicle). The ripe kernel is composed of two cotyledons and an embryonic axis with a radicle and plumule, which will form the first root, shoot, and leaves during germination.

A mature Chinese chestnut comprises three layers: the shell, the pellicle, and the kernel. The shell is typically brown, light to moderately pubescent, with a white tuft of stylar remnants at the tip, and the lighter-brown, rougher-textured hilum at the base. Shells are somewhat soft

and pliable, unlike the hard shells of other tree nuts. Peeling back the shell reveals the skin-like pellicle, the light brown seed coat covering the kernel (Figure 7). The distinct groove seen in the kernel is residual evidence of the placenta's location between the kernel and the shell. Removing the pellicle reveals the bright yellow kernel composed of two cotyledons and the radicle plumule.

Approximately six weeks after pollination, the shells appear green and fuzzy (Figure 8). After 10 weeks, the shells have grown to mature size and have become much shinier and more glabrous; however, the shells are white in color and very soft. At time

of ripening, the shells have changed from shiny white to the familiar shiny brown. The brown coloration coincides with the hardening of the hilum and dehiscence of the ripe nuts from the bur. When ripe, Chinese chestnut burs usually open while still attached to the tree and nuts fall individually to the ground. Harvest occurs approximately 12 to 14 weeks after pollination, typically ranging from mid-September to mid-October in Ohio.

In contrast to many other tree nuts, chestnut kernels are mostly composed of carbohydrates (mainly starch) with smaller amounts of fat and protein. Chestnut kernels continue to undergo chemical and physiological changes after they ripen and fall from the tree, including the conversion of much of the starch to sucrose, making the nuts sweeter and more delectable post-harvest. The extent and nature of post-harvest changes in chestnut kernels vary greatly depending on environmental (storage) conditions (Miller 2006; Tzortzakos and Metzidakis 2012).

In conclusion, noteworthy attributes of chestnut development illustrated by this series of photos are as follows:

1. Chestnuts produce separate male and female flowers (monoecy) with an overwhelming preponderance of male flowers.
2. Each ovary (which becomes a chestnut) houses a large number of ovules at pollination time, but only one (sometimes two or three) develops into a kernel.
3. Growth of the bur and ovary (chestnut shell) precedes growth of the enclosed embryo (kernel).
4. Half of the kernel's mass is acquired during the last 2 weeks before nut drop.

The same sequence of development and maturation occurs wherever chestnuts occur, although the timing of bloom varies with geographic location (earlier in the south, later in the north). However, these geographic differences are ameliorated during the season such that the time of harvest is not as variable as the time of bloom.

The genus *Castanea* has long been useful in the ecology and economy of the human environment, and with a strong knowledge base and proper cultivation these species can be improved and utilized to help meet resource demands of the future.

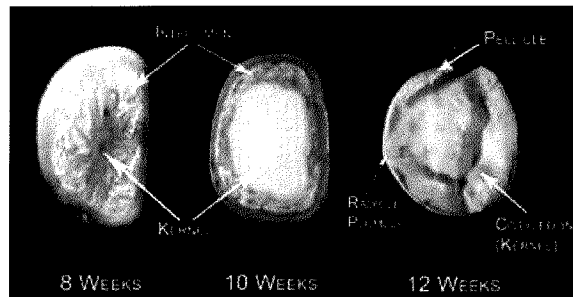


Figure 6: Expansion of the kernel inside the shell

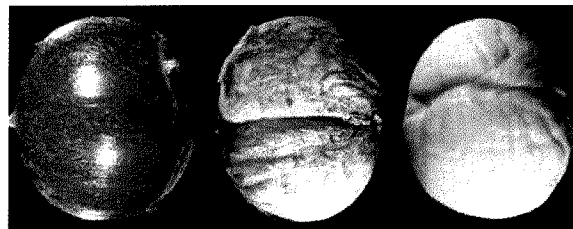


Figure 7: Layers of a ripe chestnut.

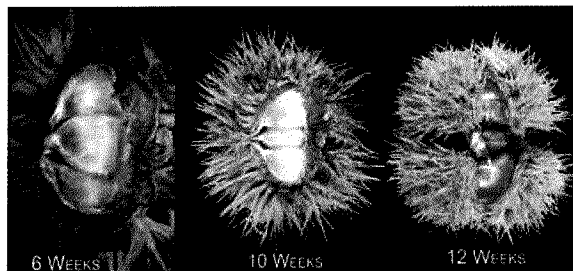


Figure 8: Maturation of the shells inside the bur.

100 YEARS

SPECIALISED COMPACT TRACTORS
31 TO 95 HP
LOW PROFILE WITH CAB AS LOW AS 1.75m
2 YEAR WARRANTY
COMPUTER MONITORED CABIN AIR QUALITY

VERSATILE

POWERFUL

STABLE

PRESURISED CAB

MULTI-FUNCTIONAL

LOW IMPACT

KUBPOWER
 569 GRAND JUNCTION ROAD, GEPPS CROSS S.A. 5094
 PH: 08 8139 7200 EMAIL: kubpower@kubpower.com.au

ANTONIO CARRARO
 Tractor people